



WWW.SMITTYBILT.COM

## Installation Instructions

Part # 76825  
 Modular Front Bumper  
 07-14 Jeep JK (2 & 4 Door)

Please read instructions entirely before installing this product.

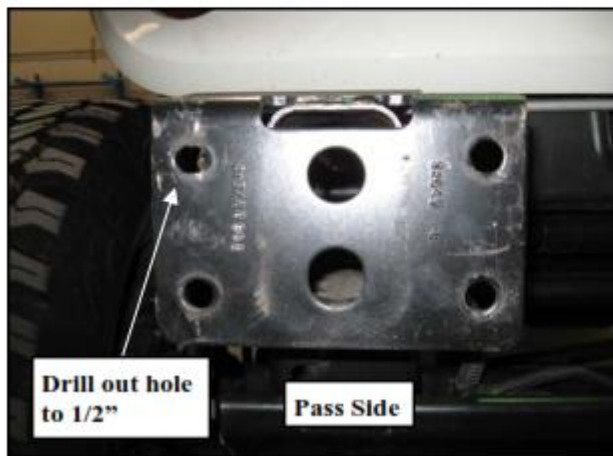
Parts Included	Qty
93-7534 XRC Modular Bumper	1
90-7552 Top Cover Plate : Drvr	1
90-7553 Top Cover Plate : Pass	1
90-7554 Side Cover Plate : Drvr	1
90-7555 Top Cover Plate : Pass	1
90-6841 Hardware Pack: Stinger Bumper	1
7/16" X 1 1/4" HEX BOLT GR. 8	4
7/16" STOVER NUT GR. C	4

Parts Included	Qty
7/16" SAE HARDENED FLAT WASHER	8
1/2" STOVER NUT GRADE C	2
1/2" X 1 1/4" CARRIAGE BOLT GR. 5	2
1/2" USS HARDENED FLAT WASHER	2
7/16" X 1" BUTTON HEAD BOLT BLK	8
7/16" STOVER NUT GR. C	4
7/16" SAE HARDENED FLAT WASHER	4
3/8" X 1/2" BUTTON HEAD BOLT BLK	6

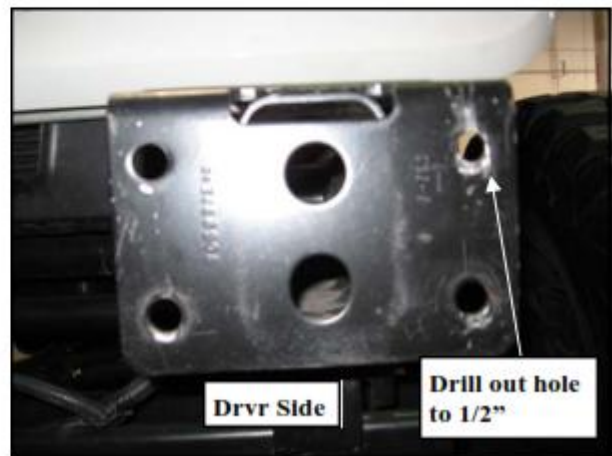
**Step 1:** Unbolt and remove the factory front bumper and hardware from the vehicle.

*NOTE: Be sure to unclip the factory fog light wiring harnesses if equipped*

**Step 2:** Drill out the (2) top row, outer holes in the frame bumper mounting plates to 1/2".  
 (Fig. A,B)



( Fig A )



(Fig B)

For Technical Support/Warranty Information please call 310-762-9944

Smittybilt, 400 West Artesia Blvd, Compton, CA 90220



WWW.SMITTYBILT.COM

## Installation Instructions

Part # 76825

Modular Front Bumper

07-14 Jeep JK (2 & 4 Door)

**Step 3:** *NOTE: If installing a winch, attach it to the bumper prior to bumper installation.* If no other accessories are to be installed, attach the stainless top cover plates (90-7552 driver and 90-7553 Pass) to the top of the XRC bumper (93-7534) using the supplied (8) 7/16" X 1" button head bolts and hardware. (Fig C)

**NOTE:** For winches with motors/gear box longer than 6 1/2" install winch after installing bumper. Swivel socket, universal joint and wobble may be needed. Frame mounts may need to be trimmed to accommodate larger winches. (Fig1) For winches that have a motor shorter than 6 1/2" you may mount the winch prior to installing bumper to vehicle.

After bumper is installed carefully set winch in winch cradle to determine and mark where you will need to grind or cut. Set the winch to the side and carefully cut marked areas. Be sure to touch up area with sealant/paint.



(Fig 1)



ALWAYS USE CAUTION WHEN CUTTING OR GRINDING

For Technical Support/Warranty Information please call 310-762-9944

Smittybilt, 400 West Artesia Blvd, Compton, CA 90220



WWW.SMITTYBILT.COM

## Installation Instructions

Part # 76825

Modular Front Bumper

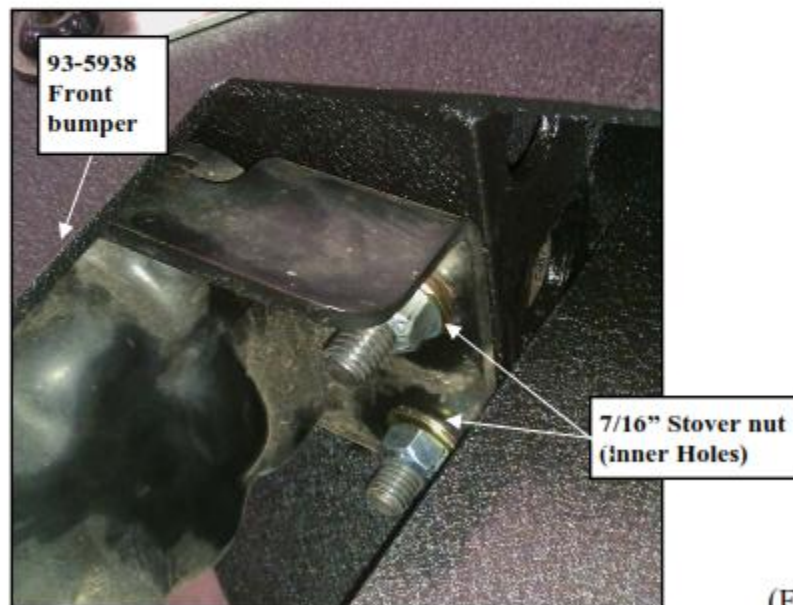
07-14 Jeep JK (2 & 4 Door)



(Fig C)

**Step 4:** Install the stainless side cover plates (90-7554 *drv*r and 90-7555 *Pass*) to the side the XRC bumper (93-7534) using the supplied (6) 3/8" x1/2" button head bolts. (Fig. C)

**Step 5:** *NOTE: This step might require 2 people.* Raise the new XRC modular front bumper (93-7534) up into place and align the bumper mounting studs with (4) holes on the frame mounting plates. Secure using the supplied 7/16" nuts. Insert the (4) 7/16" X 1 1/4" bolts into the remaining (4) outer empty holes and secure using the supplied hardware. (Fig D)



(Fig D)

For Technical Support/Warranty Information please call 310-762-9944

Smittybilt, 400 West Artesia Blvd, Compton, CA 90220



WWW.SMITTYBILT.COM

## Installation Instructions

Part # 76825

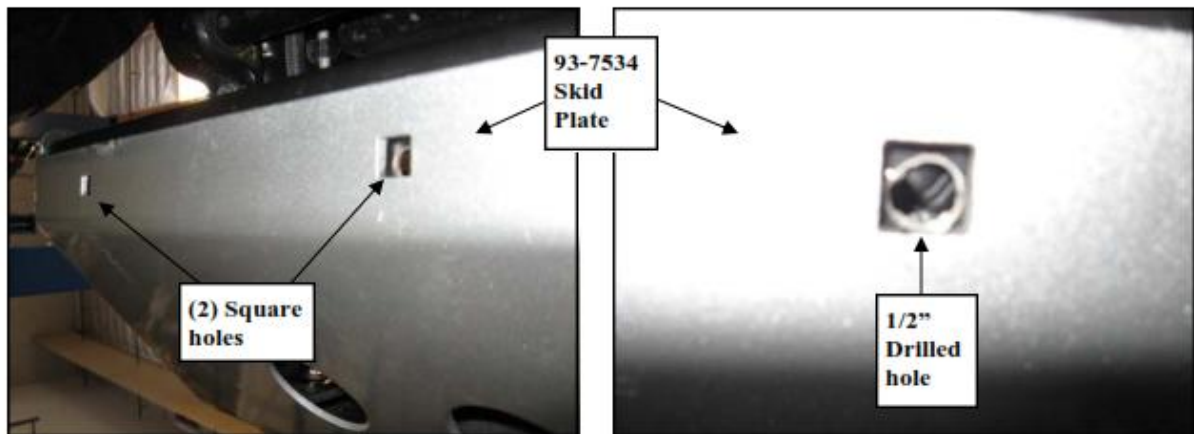
Modular Front Bumper

07-14 Jeep JK (2 & 4 Door)

**Step 6:** Level the bumper and torque the 7/16" Hardware to 60 ft./lbs. (Fig C)

**Step 7:** Clamp the bottom XRC modular bumper skid plate to the lower crossmember. Using the (2) square holes as a guide, center punch and drill through factory crossmember using a 1/2" drill bit. (Fig D,E)

**NOTE:** Be very careful not to damage the bumper while drilling.



(Fig D)

(Fig E)

**Step 8:** Install the (2) 1/2" X 1 1/4" carriage bolts into the front XRC modular bumper through the previously drilled holes in the crossmember and secure using the 1/2" hardware. (Fig F)



(Fig F)

**Step 9:** Torque the carriage bolt hardware to 45 ft./lbs. (Fig F)

For Technical Support/Warranty Information please call 310-762-9944

Smittybilt, 400 West Artesia Blvd, Compton, CA 90220



WWW.SMITTYBILT.COM

## ***Installation Instructions***

Part # 76825  
Modular Front Bumper  
07-14 Jeep JK (2 & 4 Door)

**Step 10:** Reattach any previously unclipped wiring harnesses.

**Step 11:** Installation is now complete.



For Technical Support/Warranty Information please call 310-762-9944

Smittybilt, 400 West Artesia Blvd, Compton, CA 90220



WWW.SMITTYBILT.COM

## **Installation Instructions**

Part # 76825

Modular Front Bumper

07-14 Jeep JK (2 & 4 Door)

---

### **Limited Warranties**

Smittybilt's products are covered under the following limited warranties only. Note that the duration of the limited warranty differs according to the material and finish of the product purchased. Subject to the duration and conditions of the limited warranty stated below, Smittybilt warrants to the original retail purchaser that its products are free from defects in material and workmanship. All other warranties and representations express or implied, are hereby disclaimed, including fitness for merchantability and buyer's intended use or purpose. All parts are sold "AS IS" except for the limited warranties granted herein. Buyer assumes all risks as to the selection, suitability and performance of all goods and products selected. This limited warranty does not cover damage or impairment in any part due to misuse, improper installation, accident or contact with on-road or off-road hazards, product modification, improper or inadequate cleaning and/or maintenance. Smittybilt is not responsible for items damaged during shipping. This warranty is not transferable from the original buyer. For the original Buyer to be eligible for the limited warranty coverage, the Buyer must provide proof of purchase. Smittybilt strongly recommends returning the warranty registration card.

Customer's remedy hereunder shall be limited only to repair or replacement (at Smittybilt's option) of any defective part(s) returned to Smittybilt at customer's expense. The determination of whether or not a returned part is defective or subject to coverage under the limited warranties stated herein shall be made at Smittybilt's sole discretion.

To assure product quality, Smittybilt reserves the right to change product design, material, specification and finishes without prior notice to customers. This limited warranty gives you specific legal rights and you may also have other rights, which may vary from state to state. Some states do not allow limitations on how long an implied warranty lasts, so the above limitations may not apply as to you. Also, some states do not allow the exclusion or limitation of incidental or consequential damages, so the above limitations or exclusions may not apply to you. Smittybilt reserves the right to discontinue product lines and substitute products, or provide other remedies than those listed in this limited warranty for those discontinued products.

### **Warning**

Rollover and other types of vehicle accidents may result in serious injury or death to you, your passengers and others sharing the road. Smittybilt accessories are decorative and are not intended to reduce or avoid injury or damage in the event of an accident. The weight and location of Smittybilt accessories may affect your vehicles' handling, stability and performance, creating an increased risk of accident or rollover. Before installing any accessory, check state laws and assure that the accessory will not obscure any lights or interfere with proper operation on your vehicle's safety equipment. Consult your owner's manual and the Smittybilt instructions, or additional safety information. Smittybilt products, nor the warnings contained herein, are not a substitute for your safe driving. Don't drink and drive, always use seat belts and don't drive faster than conditions permit.

**For Technical Support/Warranty Information please call 310-762-9944**

---

**Smittybilt, 400 West Artesia Blvd, Compton, CA 90220**