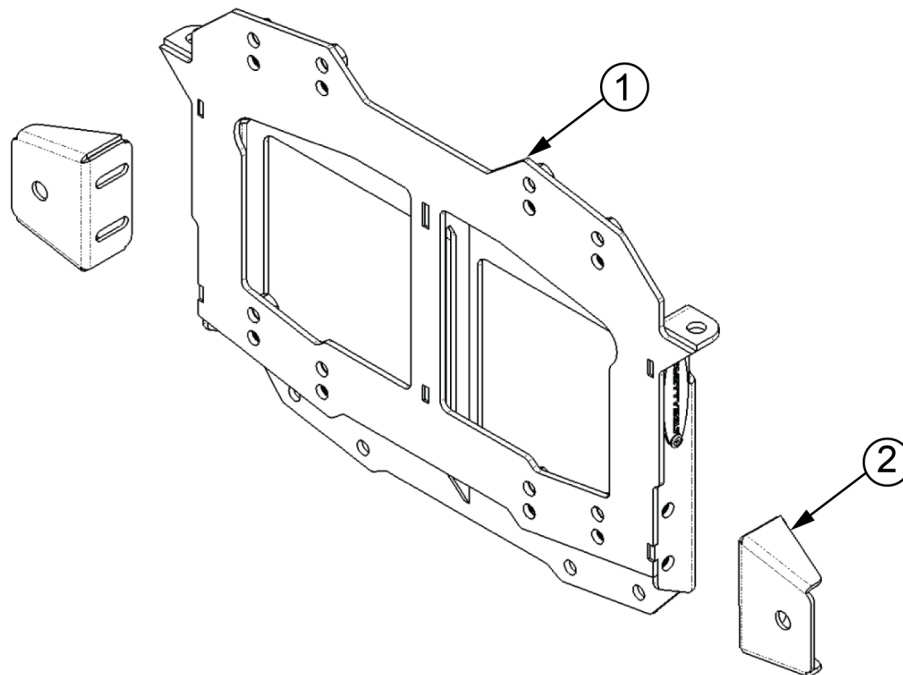




Installation Instructions:

(Part # SB7721)
Jeep JL Spare Tire
Relocation Bracket

WARNING: READ INSTRUCTIONS THOROUGHLY BEFORE INSTALLATION. FAILURE TO FOLLOW INSTRUCTIONS MAY RESULT IN DAMAGE TO WIRING OR TAILGATE.



Part included	Qty.	ID
84-11787 Tire Carrier Spacer	1	1
84-11791 Bumper Wing	1	2
7721-01 HARDWARE PACK Mount	1	
M8x1.25x35mm HEX BOLT GR. 10.9	12	
M8 Flat washer	12	
M8 Split Lock washer	4	
7721-02 Push in Hole Plug	2	

Tools Required:

Socket wrench

Socket wrench extension

Metric socket set, M13 required

Torque wrench

Auto trim tool set

Impact wrench (recommended)

For Technical Support/Warranty Information please call 310-762-9944

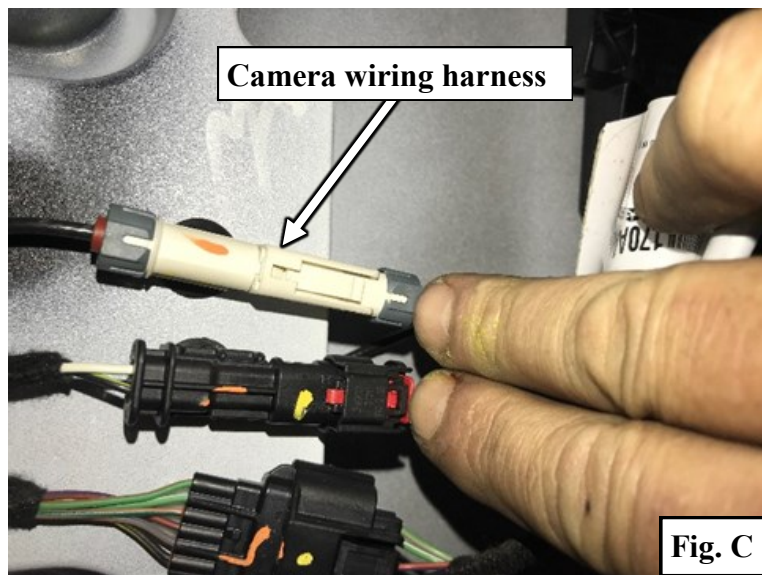
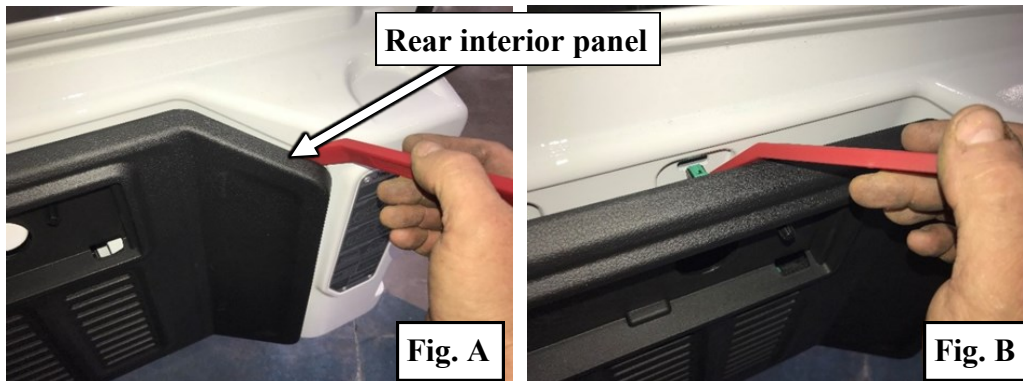


Installation Instructions:

*(Part # SB7721)
Jeep JL Spare Tire
Relocation Bracket*

INSTALLATION:

- Step 1** : Remove the spare tire from OE tire carrier. Consult your owner's manual if necessary.
- Step 2** : Open tailgate, starting on the latch side, with a plastic pry bar, carefully remove the rear interior panel (**Fig. A, B**) and set aside. Once the panel is removed, carefully disconnect brake light (black connector in middle) by pulling the red locking tab outwards and then squeezing the retaining tab while pulling the two halves of the connector apart. The camera wiring harness (white connector on top) doesn't have a locking tab and is disconnected the same way. **Do not pull directly on wiring** (**Fig C**).



For Technical Support/Warranty Information please call 310-762-9944



Installation Instructions:

*(Part # SB7721)
Jeep JL Spare Tire
Relocation Bracket*

Step 3 : On the outside of the tailgate, gently remove the wiring grommet. Feed the disconnected wiring harness through the hole on the tailgate. Use a trim tool to gently pry the grommet if needed (**Fig. D**).



WARNING: REMOVE WIRING HARNESS COMPLETELY FROM THE OE TAILGATE, THROUGH THE EXTERIOR HOLE. FAILURE TO DO SO MAY RESULT IN DAMAGE TO THE WIRING HARNESS.

For Technical Support/Warranty Information please call 310-762-9944

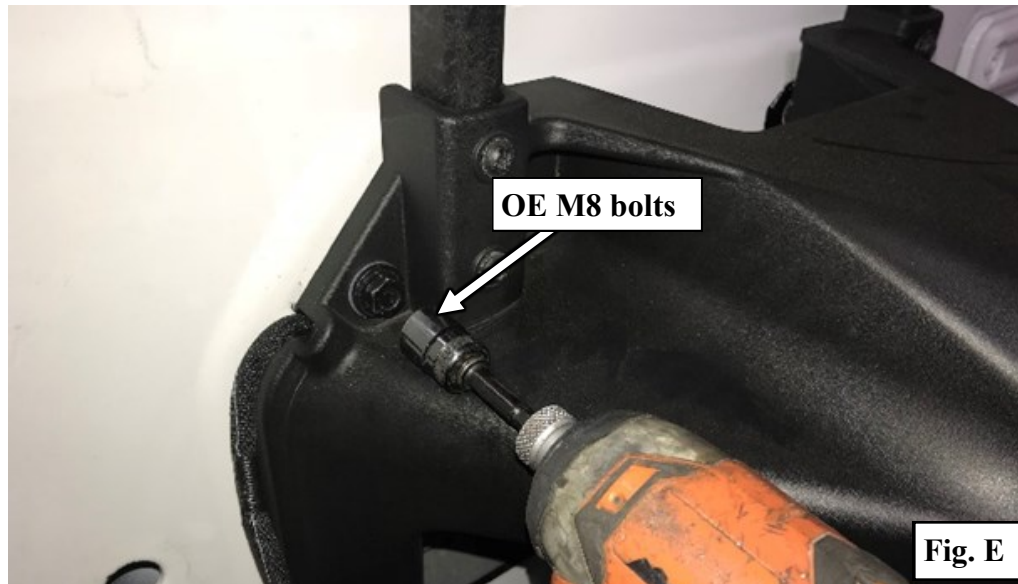
Smittybilt, 400 W. Artesia, Compton, CA 90220



Installation Instructions:

*(Part # SB7721)
Jeep JL Spare Tire
Relocation Bracket*

Step 4 : Use an 13mm socket to remove the eight (8) OE M8 bolts holding the tire carrier to the tailgate (Fig. E) .



Step 5 : Remove the two (2) Rubber anti-rattle bumpers from the tailgate by pulling the nipple on the inside of the tailgate (Fig. F) whilst pulling and twisting harder on the outside (Fig. G).



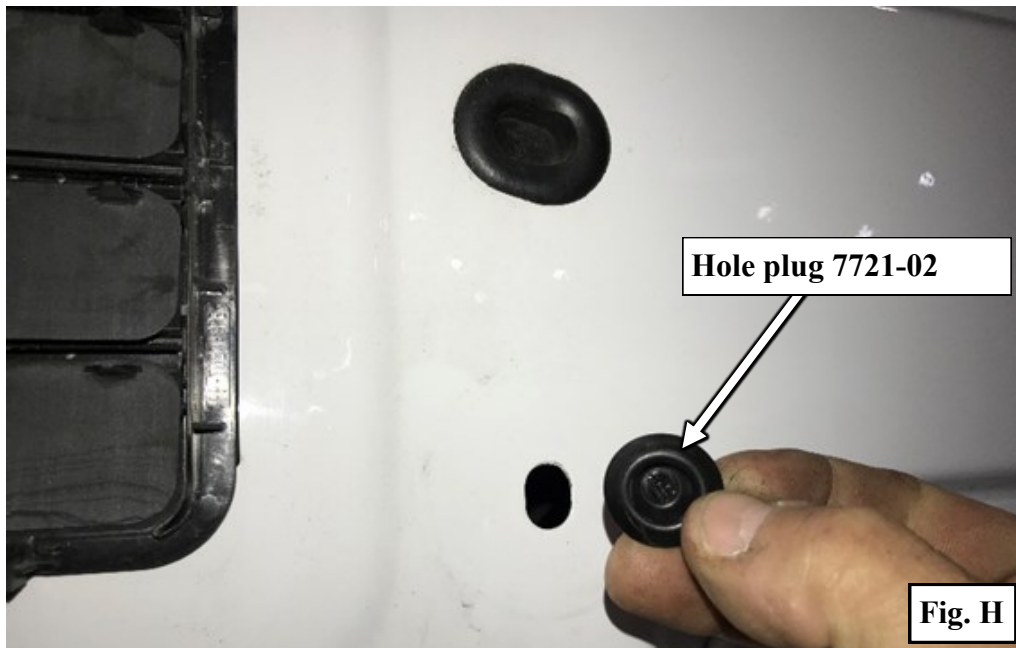
For Technical Support/Warranty Information please call 310-762-9944



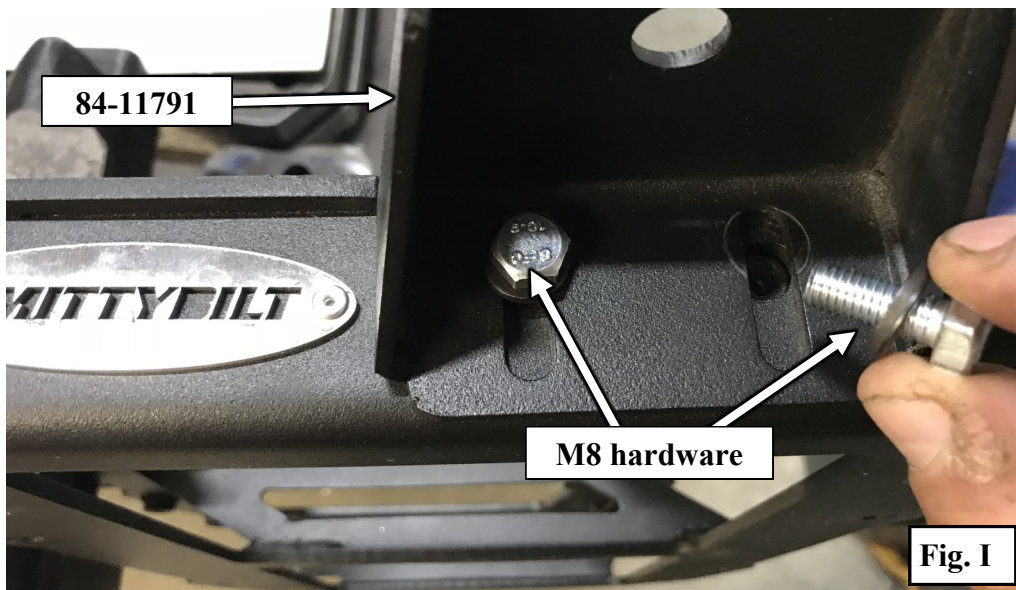
Installation Instructions:

*(Part # SB7721)
Jeep JL Spare Tire
Relocation Bracket*

Step 6 : Insert the push in hole plugs (7721-02) into the anti-rattle bumper holes (Fig. H). The plugs will snap into place with the outer edge flush to the door when properly installed.



Step 7 : Using (2) each M8x25x1.25 bolts, split lock washer, and flat washers, install the anti-rattle bumper wings (84-11791) to the tire spacer, finger tight as shown in (Fig. I).



For Technical Support/Warranty Information please call 310-762-9944



Installation Instructions:

*(Part # SB7721)
Jeep JL Spare Tire
Relocation Bracket*

Step 8 : Install the OE rubber anti-rattle bumpers into the bumper wings by pulling the nipple through the hole, while slightly twisting the bumper (**Fig. J**).



Step 9 : Using the OE M8 hardware removed in **Step 4**, making sure it is right side up, install the new relocation bracket to the tailgate. Torque the bolts to **18 ft-lbs (Fig. K)**.



For Technical Support/Warranty Information please call 310-762-9944

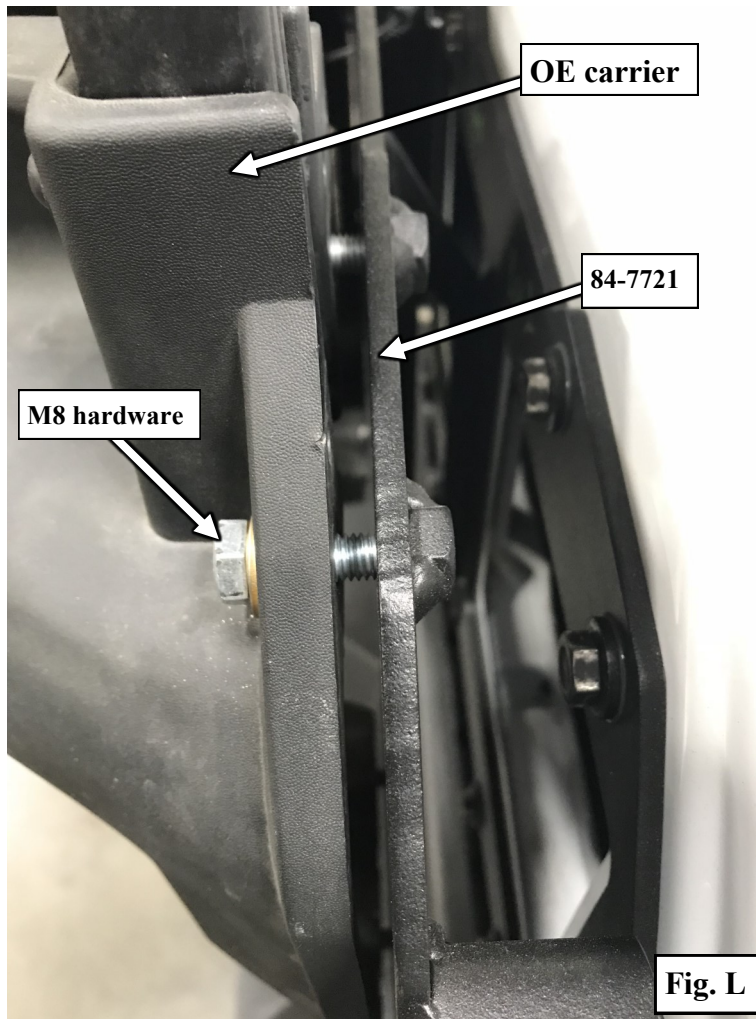


Installation Instructions:

*(Part # SB7721)
Jeep JL Spare Tire
Relocation Bracket*

Note : *Early versions of this relocation bracket only have one mounting position, later models have two mounting positions allowing for an extra inch of upwards adjustment.*

Step 10: Using the provided M8x35x1.25 bolts and washers, loosely attach the OE tire carrier to the relocation bracket (84-7721) (Fig. L).



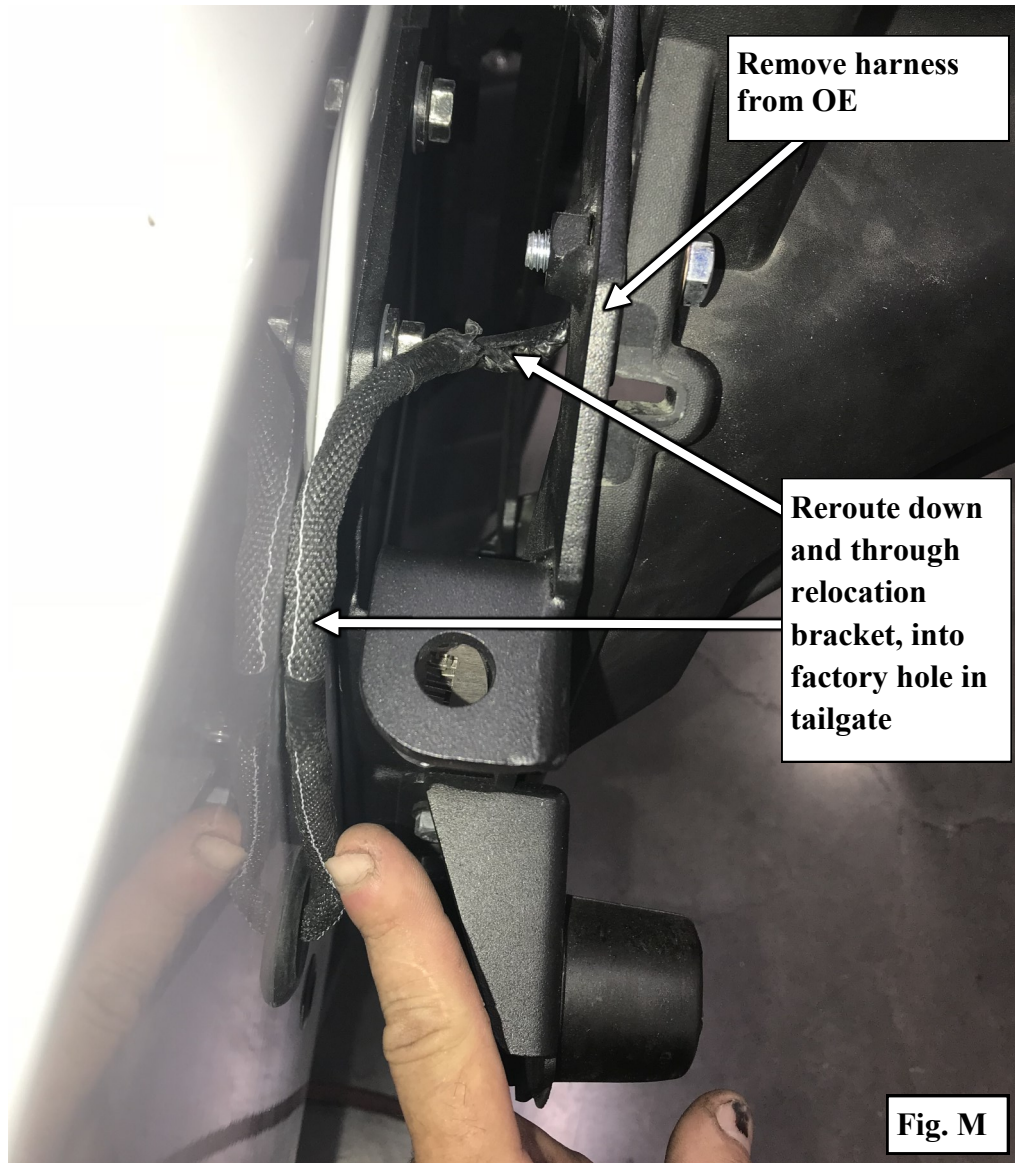
For Technical Support/Warranty Information please call 310-762-9944



Installation Instructions:

*(Part # SB7721)
Jeep JL Spare Tire
Relocation Bracket*

Step 11: Carefully remove the wiring harness from the OE location on the carrier, route it under and through your new relocation bracket (**Fig M**).



Note : *Installing a 37" or larger tire without a reinforcement bracket such as Smittybilt 7743 or Mopar 82215356AB, may void warranty and eventually seriously damage the OE tailgate.*

If your spare tire is 35" or less, proceed to Step 14.

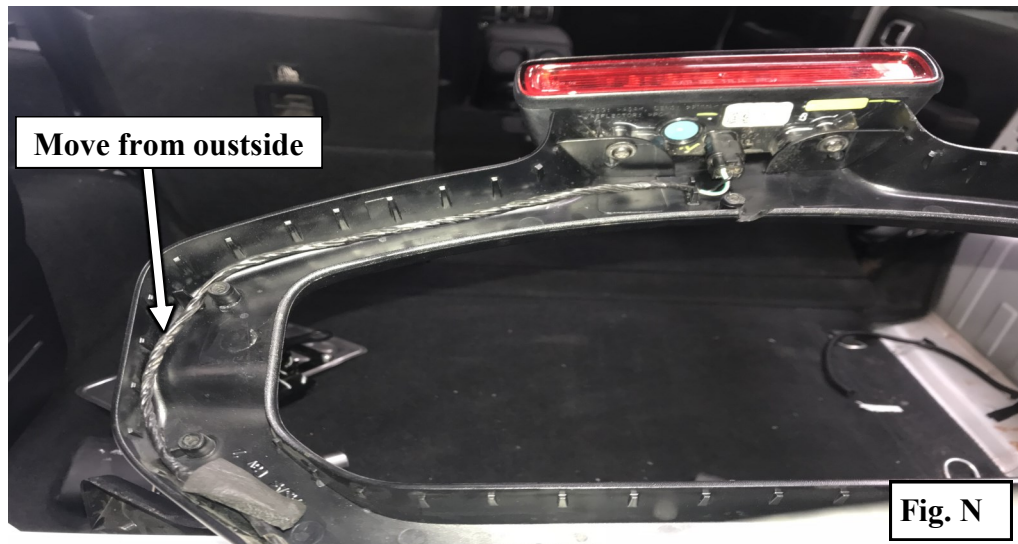
For Technical Support/Warranty Information please call 310-762-9944



Installation Instructions:

*(Part # SB7721)
Jeep JL Spare Tire
Relocation Bracket*

Step 12: If mounting a tire larger than 35" it will be necessary to raise the 3rd brake light frame up to clear the top of the tire. With a **T25** Torx bit remove the screws on the faceplate of the 3rd brake light frame. Carefully remove the backplate (**Fig N**), and move the wire harness from the outside of the mounting posts to the inside (**Fig O**) and carefully feed the extra length down the support post. Re-install the faceplate and tighten the Torx screws snug or about **12in-lbs**.



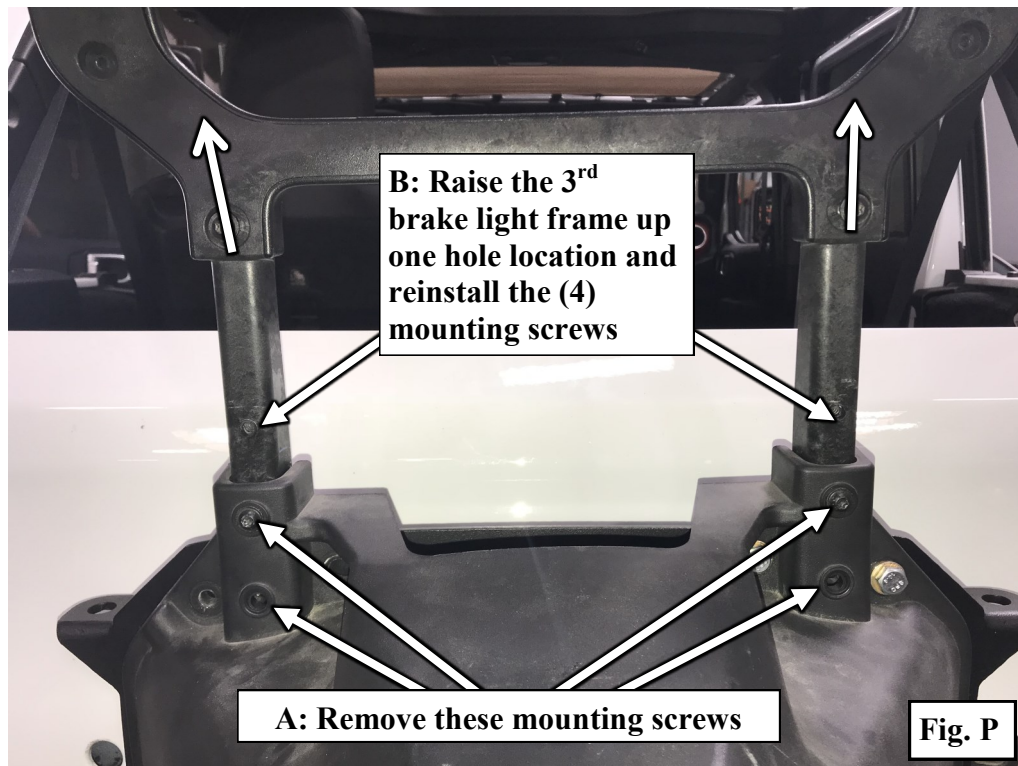
For Technical Support/Warranty Information please call 310-762-9944



Installation Instructions:

(Part # SB7721)
 Jeep JL Spare Tire
 Relocation Bracket

Step 13: (Step A) Carefully remove the (4) T25 screws securing the frame posts to the OE tire carrier (Fig P). Raise the frame up to the next hole location and (Step B) reinstall the mounting screws. Tighten until snug or about 24in-lbs.



Step 14: Re-check to make sure wiring harness is safely routed, hand tighten the (8) Carrier mounting bolts, then torque them to 24ft-lbs.

Step 15: Reversing the process in Steps 2 & 3, feed the brake light and camera harness through the hole in the tailgate. Re-seat the wiring grommet, reconnect the 3rd brake light and camera to the harness on the inside of the tailgate and re-install the tailgate panel by aligning the tabs and pressing into place.

For Technical Support/Warranty Information please call 310-762-9944



Installation Instructions:

(Part # SB7721)

Jeep JL Spare Tire

Relocation Bracket

Step 16: Loosely install the spare tire and adjust the anti-rattle bumpers so that they will make firm contact when the spare tire is fully tightened. **(Fig. Q)** When satisfied with fitment torque the spare tire to **59ft-lbs** and the **M8** bolts to **24ft-lbs**.



For Technical Support/Warranty Information please call 310-762-9944

Smittybilt, 400 W. Artesia, Compton, CA 90220



Installation Instructions:

(Part # SB7721)

Jeep JL Spare Tire

Relocation Bracket

Step 17: Re-check all hardware, if necessary, torque to specs given on last page of these instructions (**Fig R & S**). Your install is complete.



Note : *Shown with Smittybilt license plate relocation kit 7743, included with XRC and SRC bumpers, also sold separately.*

For Technical Support/Warranty Information please call 310-762-9944

Smittybilt, 400 W. Artesia, Compton, CA 90220



Installation Instructions:

(Part # SB7721)

Jeep JL Spare Tire

Relocation Bracket

Use this only as a guide for hardware without a called out torque specification in the instruction manual.

Bolt Torque and ID						
Decimal System			Metric System			
All Torques in Ft. Lbs. Maximums						
Bolt Size	Grade 5	Grade 8	Bolt Size	Class 9.8	Class 10.9	Class 12.9
5/16	15	20	M6	5	9	12
3/8	30	45	M8	18	23	27
7/16	45	60	M10	32	45	50
1/2	65	90	M12	55	75	90
9/16	95	130	M14	85	120	145
5/8	135	175	M16	130	165	210
3/4	185	280	M18	170	240	290

<p>1/2-13x1.75 HHCS</p> <p>Grade 5 Grade 8</p> <p>(No. of Marks + 2)</p> <p>D T L X</p>	<p>M12-1.25x50 HHCS</p> <p>D T L X</p>
<p>G = Grade (Bolt Strength)</p> <p>D = Nominal Diameter (Inches)</p> <p>T = Thread Count (Threads per Inch)</p> <p>L = Length (Inches)</p> <p>X = Description (Hex Head Cap Screw)</p>	<p>P = Property Class (Bolt Strength)</p> <p>D = Nominal Diameter (Millimeters)</p> <p>T = Thread Pitch (Thread Width, mm)</p> <p>L = Length (Millimeters)</p> <p>X = Description (Hex Head Cap Screw)</p>

For Technical Support/Warranty Information please call 310-762-9944



Installation Instructions:

(Part # SB7721)

Jeep JL Spare Tire

Relocation Bracket

Product cleaning and maintenance instructions

Stainless Steel Finish – Aluminum polish may be used to polish small scratches and scuffs on the finish. Mild soap, window or glass cleaner may be used to clean the finish. **Dual state powder coat finish** – Mild soap, window or glass cleaner may be used to clean the finish. In order to protect the finish, you may wax your product on a regular basis with pure carnauba automotive wax. Do not use any types of soap, polish or wax that contains abrasive that could damage the finish. **Textured coated finishes** should be cleaned with a mild soap on a damp sponge. Do not apply polish or wax that requires to be removed by means of buffing. This type of wax is commonly used at car wash facilities. **Chrome Finish** – Mild soap, window or glass cleaner may be used to clean the finish. In order to protect the finish, you should wax your product on a regular basis with pure carnauba automotive wax. Do not use any types of soap, polish or wax that contains abrasive that could damage the finish.

Limited Warranties

Smittybilt's products are covered under the following limited warranties only. Note that the duration of the limited warranty differs according to the material and finish of the product purchased. Subject to the duration and conditions of the limited warranty stated below, Smittybilt warrants to the original retail purchaser that its products are free from defects in material and workmanship. All other warranties and representations express or implied, are hereby disclaimed, including fitness for merchantability and buyer's intended use or purpose. All parts are sold "AS IS" except for the limited warranties granted herein. Buyer assumes all risks as to the selection, suitability and performance of all goods and products selected. This limited warranty does not cover damage or impairment in any part due to misuse, improper installation, accident or contact with on-road or off-road hazards, product modification, improper or inadequate cleaning and/or maintenance. Smittybilt is not responsible for items damaged during shipping. This warranty is not transferable from the original buyer. For the original Buyer to be eligible for the limited warranty coverage, the Buyer must provide proof of purchase. Smittybilt strongly recommends returning the warranty registration card.

Customer's remedy hereunder shall be limited only to repair or replacement (at Smittybilt's option) of any defective part(s) returned to Smittybilt at customer's expense. The determination of whether or not a returned part is defective or subject to coverage under the limited warranties stated herein shall be made at Smittybilt's sole discretion.

To assure product quality, Smittybilt reserves the right to change product design, material, specification and finishes without prior notice to customers. This limited warranty gives you specific legal rights and you may also have other rights, which may vary from state to state. Some states do not allow limitations on how long an implied warranty lasts, so the above limitations may not apply as to you. Also, some states do not allow the exclusion or limitation of incidental or consequential damages, so the above limitations or exclusions may not apply to you. Smittybilt reserves the right to discontinue product lines and substitute products or provide other remedies than those listed in this limited warranty for those discontinued products.

Warning

Rollover and other types of vehicle accidents may result in serious injury or death to you, your passengers and others sharing the road. Smittybilt accessories are decorative and are not intended to reduce or avoid injury or damage in the event of an accident. The weight and location of Smittybilt accessories may affect your vehicle's handling, stability and performance, creating an increased risk of accident or rollover. Before installing any accessory, check state laws and assure that the accessory will not obscure any lights or interfere with proper operation on your vehicle's safety equipment. Consult your owner's manual and the Smittybilt instructions, or additional safety information. Smittybilt products, nor the warnings contained herein, are not a substitute for your safe driving. Don't drink and drive, always use seat belts and don't drive faster than conditions permit.

For Technical Support/Warranty Information please call 310-762-9944

Smittybilt, 400 W. Artesia, Compton, CA 90220